

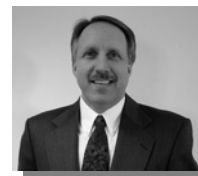
Airwaves

THE OFFICIAL NEWSLETTER OF GLASFLOSS INDUSTRIES

Fall/Winter 2009

Overcoming Hurdles in 2009

Scott Lange, President



Inside This Issue

Executive Promotions Pg. 2

Ellie Fitzgerald Joins Glasfloss Pg. 2

New Puracell VX Pg. 2

Non-catalog Products Pg. 3

Non-catalog Products Continued Pg. 3

Non-catalog Products Continued Pg. 3

Z-Line Series Pleats Update Pg. 4

As 2009 winds to a close, I would like to thank you for your business and the patience you have shown, especially these past few months.

As most of you are painfully aware, Glasfloss transitioned to a new computer system on August 1st. I don't want to make excuses; we had disruptions especially the first 4 to 6 weeks.

At this point almost every issue a customer might experience has been corrected. We are still working on permanent solutions for a couple functions but have internal methods in place to insure we don't drop the ball until final programming is implemented.

We are also working on some wish list items that we hope will help improve efficiencies for you when working with Glasfloss. Remaining system concerns are related to how we work internally and shouldn't impact customers.

It seems like we ran into a rash of human

errors during this period which are not excusable but might be expected when processes dramatically change and people end up doing double and triple the work.

Your experience with Glasfloss should have been more typical over the past several weeks. If you are still experiencing disruptions, please let our CEO, Don Kingston or me know directly by sending your e-mail to:

dkingston@glasfloss.com or slange@glasfloss.com

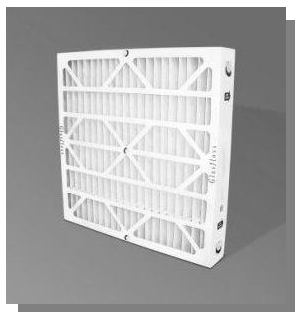
I realize all problems won't magically go away. As in any other year, we will continue to have a glitch or human error on occasion. However I think the majority of the software related issues are behind us now. And I thought the economy was going to be the negative topic. Each of you probably have your own stories to tell regarding the economy. I just want to say that Glasfloss is here to serve you; we appreciate you, your efforts, and your business. Thanks for everything in 2009; we wish you the very best in 2010!

Visit us
on the web at:

www.glasfloss.com



New HVGT Gas Turbine Pleat



The new Glasfloss HVGT is a slightly narrower 24x24x4 HV pleated filter made with a much thicker die-cut specifically designed for the GE LM-6000 turbine. A standard 4" pleat is too thick for this application, thus the need for a special depth. The HVGT may be used in other demanding turbine applications as well as some HVAC systems benefitting from this design. For more information please visit: www.glasfloss.com or ask your Glasfloss Sales Representative.

Glasfloss Management Team Moving Up

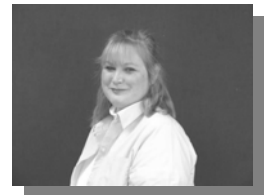
Glasfloss is pleased to announce the promotion of three key managers to the position of Vice President:

Cheryl Thompson began her career with Glasfloss in 1987 and has enjoyed a long, successful climb to the position of Vice President. As Vice President of Administrative Services, Cheryl is responsible for Glasfloss Human Resources and Integrated Technology.

Bill McKnight has been with Glasfloss for 17 years and has had a long career in purchasing spanning over 30 years. As Vice President of Purchasing, Bill is responsible for all corporate purchasing for five manufacturing plants in the U.S.

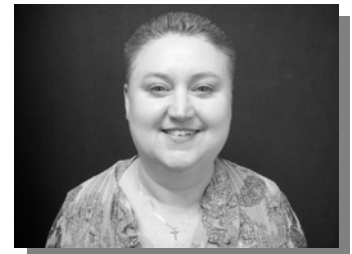
Steve Wilson, CPA, has been with Glasfloss since 2003 and has over 16 years of experience working in finance. As Vice President of Finance, Steve will oversee all financial areas of Glasfloss.

Congratulations to Cheryl, Bill and Steve in their continued success with Glasfloss!



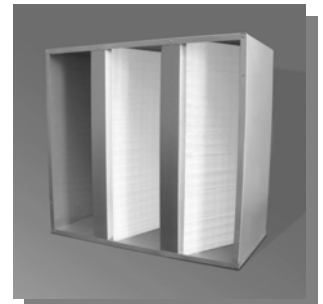
Ellie Fitzgerald Joins Glasfloss Sales Team

We are pleased to announce that Mrs. Ellie Fitzgerald will be assisting the Glasfloss sales team with inside sales support for all U.S. territories. Ellie began her career in the filter industry over 20 years ago and brings a wealth of customer service and inside sales support experience to Glasfloss. During her interview process, Ellie was asked what were the most important attributes she could bring to Glasfloss & our customers. Ellie replied: "I learned many years ago that if you do two things in this business you will be well ahead of the majority of the competition. One is to show honest compassion for the customer. I try very hard to smile through the phone & remain positive when I'm helping customers. The other is to always go the extra mile when providing sales support for a customer and the District Managers." Ellie can be contacted via email at: efitzgerald@glasfloss.com



New Puracell VX 2V Metal Box Filter

The new Puracell VX is made just like the Puracell V, but in the "2-V style" like our Puracell VPX. It is a flush box 2-V filter which works great in the Camfil Glide Pack or 2" front load filter frames. The best use is where a pre-filter track is not available, but there is ample space upstream of this product. A pleated pre-filter can be directly clipped right to the upstream face of this filter. This is a feature our competitors don't offer in their regular Z-Pak or Magna style rigid filters. For more information, please contact your Glasfloss Sales Representative. (Clips not available from Glasfloss)



Glasfloss Non-Catalog Products-Did You Know?

Over the years, Glasfloss has developed many items with the help of certain distributors to be a solution for a specific problem. Over time, those items have come in very handy for other distributors as they encounter similar applications. While we can not possibly catalog every custom-designed filter we make, we can list a lot of them off for you. This list may not be complete, but should give you an idea of what additional items are available from Glasfloss. If you need more information about these products or if you have an application requiring these items, please contact your sales representative or customer service representative.

Please note that all of these products are not made in all Glasfloss facilities; orders may result in additional freight charges. Glasfloss is constantly undergoing research and development. We hope to have several new items to offer you in the near future. This entire page is devoted to a list of these special items below:

- **4" Industrial Fiberglass Pad:** Also used in the gas turbine industry as a pre-filter. (Contact your District Manager for minimums).
 - **Master-Pak Poly Links:** 24 same size poly panels linked together with a 2" gap. Works well for customers who stock these and want to cut smaller links. 12 panels are linked together for the PR20 Master Pak.
 - **4" MERV 11 Filter:** In die cut with header available in certain sizes.
-
- **Dry Poly Rings & Poly Links:** Similar in performance & pressure drop as our standard PR-5, 10 & 20. Slightly different media combination eliminates the tackifier from the downstream side.
 - **Puracell VP & VPX:** In higher efficiencies-you already know we make these in MERV 11, 13 & 14. We can also make MERV 15, MERV 16 & 99.97% DOP (MERV 16 & 99.97% DOP are not available in VPX style)
 - **Puracell V:** Available in other efficiencies including MERV 15, MERV 16 and 99.97% DOP
 - **HVXM Pleat:** this is an HV pleated filter made with the same heavy duty wire backing as our Z-Paks. This product works wonders in 100% outdoor air applications where high humidity or extreme weather can cause other pleats to collapse. This product was designed specifically to withstand those extreme conditions & it works fantastically! A simple, inexpensive upgrade!
 - **Super High Capacity HEPA Filter:** With corrugated aluminum separators available for maximum airflow & minimal pressure drop.
 - **Z-Pak Filters:** Available with special "oil mist" construction.
-
- **Special Size Pleat Inserts:** Need special size MERV 8 or MERV 11 pleat inserts? What about UL Class 1 or even MERV 13 pleat inserts? We can do all this, in standard or special sizes with or without cardboard tabs.
 - **Mini-Pleats in Various Depths & Efficiencies:** Do you need a 2.75" deep HEPA mini-pleat with metal frame? Need a 4" deep mini-pleat with wood frame? Almost any depth and any efficiency between MERV 11 & 99.99% DOP are available with some limitations. This product line is the most versatile one we have.
 - **High Temperature Magna Filters:** Got a drying oven application requiring a final filter that operates at 750 degrees F? No problem. We can make 6" or 12" depth in efficiencies from MERV 11-14. High temperature 95% DOP or 99.97% DOP filters are not available.
 - **Framing Options for HEPA Filters:** Such as the standard box style (Double turned flange), X-body style, and true flush box style.

Glasfloss Airwaves

THE OFFICIAL NEWSLETTER OF GLASFLOSS INDUSTRIES

Published by Glasfloss Industries, LP
P.O. Box 150469
Dallas, TX 75315-0469

Phone: 214-741-7056
Fax: 800-435-8377

FIRST CLASS
PRE-SORT
U.S. POSTAGE PAID
DALLAS, TX
PERMIT NO. 430



Visit us on the web at:

www.glasfloss.com

Z-Line Series Pleated Filter Line Upgraded With MERV 8 Media Standard

It seems like every year we are talking about improvements and updates to our Z-Line Series pleated filters and 2009 is no exception. In case you were not aware, all SB, ZL and HV pleats now feature MERV 8 media standard, which is bright white in color.

With this change, the entire MR-8 (MRP, MSP) series has been discontinued and our customers get an upgraded product for the same price as our old MERV 7 filters. As a review, below is our current pleat line and the color of the media used for each product:

- SB, ZL, HV—MERV 8 White Media
- MR-11—MERV 11 Gold Media
- MR-13—MERV 13 White Media
- Carbotron—MERV 7 Dark Grey

PRODUCT BULLETIN Z-LINE SERIES

Z-LINE SERIES
SB, ZL, HV and MR-11

The Glasfloss Z-Line Series pleated filters offer improved performance for virtually every application. All Glasfloss Z-Line pleated filters feature filters which do not absorb moisture and will not support microbial growth. The Glasfloss Z-Line Series SB, ZL and HV filters achieve a MERV 8 rating and MR-11 filters achieve a MERV 11 rating per the ANSI-HVAC-2005, 52.2 Test Standard.

FEATURES

The Z-Line Series pleated filter products include:

- SB - Our most economically-priced pleated filter
- ZL - Offers excellent performance and value for a wide range of applications
- HV - Ideal in high-velocity systems where maximum square footage of media is necessary
- MR-11 - Provides high performance with low pressure drop for energy efficiency

CONSTRUCTION

Glasfloss Z-Line Series pleated filters incorporate media which is laminated to a galvanized metal that stabilizes the media during operation. The pleats are formed in a radial configuration to ensure proper dust-loading. The standard pleated cartridge is bonded into a two-piece heavy-duty beverage board die-cut frame that creates a double-wall thickness around the filter and prevents air bypass. The die-cut frames are internally bonded to the pleat apertures on the air entry and air-exit sides to ensure maximum integrity and support during the life of the filter.

APPLICATIONS

Glasfloss Z-Line Series pleated filters are used in a broad range of installations, from pre-filters to primary filters for computer room units. Whether used as primary filters or as pre-filters in multi-stage systems, Glasfloss Z-Line Series pleated filters offer a solution for virtually every commercial, industrial and residential HVAC application. Special construction and high-efficiency models are also available for specific applications.

PERFORMANCE

Glasfloss Z-Line Series SB, ZL, HV and MR-11 air filters shall be of the extended-surface pleated-media type. The media utilized shall be made of 100% synthetic fibers. The media shall be pleated in a tapered radial configuration. An expanded metal reinforcement shall be laminated to the air-exit side of the media by a thermo-setting adhesive to maintain continuity of the media pleats. The expanded metal shall be galvanized to resist rust and corrosion. The pleated cartridge shall be bonded to the peripheral interior of the outer frame. A heavy-duty moisture-resistant beverage board shall be utilized for an enclosing frame. The frame face shall be internally laminated to the pleated cartridge apertures. Glasfloss Z-Line Series SB, ZL, HV and MR-11 filters shall be used Class 2 under 0.1 μm and 900 and shall be rated to withstand temperatures up to 180 degrees Fahrenheit.

MEETS LEED REQUIREMENT OF 10% FV-1

- SB, ZL & HV: MERV 8
- MR-11: MERV 11
- 100% Synthetic Media
- Heavy-Duty Moisture Resistant Construction
- Galvanized Expanded Metal Backing
- Standard size 4" and 6" Thick, ZL & MR-11 Incorporate Media Separators

DIE-CUT FRAME

EXPANDED METAL

DOUBLE-WALL BEVERAGE BOARD

RECYCLABLE 100% SYNTHETIC MEDIA

"Serving You With Locations Throughout The Nation"

Glasfloss has a policy of uninterrupted research, development and product improvement and reserves the right to change design and specifications without notice.

www.glasfloss.com