



[PURACELL VP & VPX]

Mini-Pleat Series

- VP (4V) All-Plastic Series Features 8-Pack Construction
- VPX (2V) Series Features 4-Pack Construction
- High Efficiency Microfiber
- Low Resistance = Energy Savings
- Moisture Resistant Construction
- Lighter Weight = Reduced Shipping Cost

FEATURES



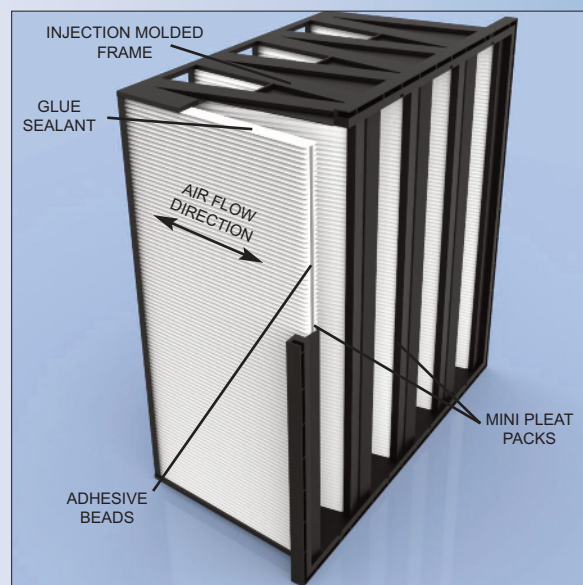
The Glasfloss Puracell VP (4V) all-plastic frame design and VPX (2V) plastic frame with metal struts extended surface mini-pleat filters offer high efficiency particulate removal, extended service life and extremely low resistance to air flow. The Puracell VP plastic frame filter incorporates lightweight, high-impact polystyrene framework for strength and durability in demanding commercial and industrial applications. The Puracell Series VPX (2V) incorporates rigid injection molded plastic framework and galvanized metal struts and offers high efficiency and low resistance to airflow. When compared to traditional rigid cell and traditional box style filters, the Puracell VP and VPX mini-pleat series offer superior performance, lower operating costs and significant energy savings. The Puracell VP and VPX are available in MERV 11, 13, 14 and MERV 15 performances. The Puracell VP is also available in MERV 16 and 99.97% HEPA Grade performance.

The Puracell VP all plastic frame and VPX Series utilize multiple mini-pleat packs which allow low resistance to air flow and long service life. The media shall be water resistant, inorganic, wet laid glass microfiber which does not support the growth of bacteria or mold. The Puracell VP and VPX media packs are constructed by pleating a continuous sheet of media. The pleats are separated by a uniform glue bead that produces low pressure drop while maximizing the filtration area. The media packs are completely sealed and bonded within the heavy-duty framework. The filters shall be rated to withstand temperatures up to 180 degrees Fahrenheit.



SPECIFICATIONS

| Efficiency | 60-65% | 80-85% | 90-95% | 98% | - | 99.97% |
|------------|--------|--------|--------|-----|----|--------|
| MERV | 11 | 13 | 14 | 15 | 16 | - |



"Serving You With Locations Throughout The Nation"

Glasfloss has a policy of uninterrupted research, development and product improvement and reserves the right to change design and specifications without notice.

www.glasfloss.com • (214) 741-7056

PRODUCT BULLETIN 11PURVP • SECTION 11 • 9-1-17

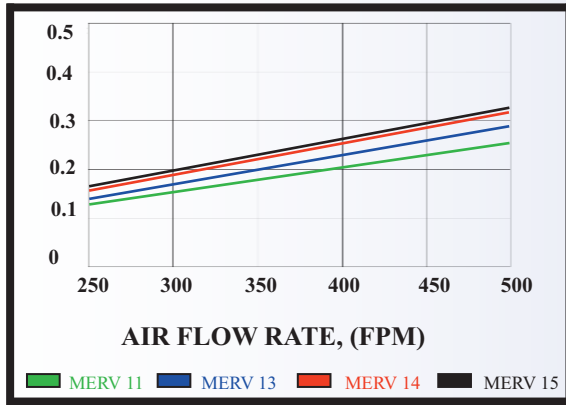
Puracell VP/VPX

| BASE MODEL NUMBER | SIZE W x H x D NOMINAL | SIZE W x H x D EXACT | RATED VELOCITY FPM | INITIAL RESIST. IN. W.G | | MEDIA SQUARE FEET | | SIZE W x H x D NOM.MM |
|-----------------------------|------------------------------|-----------------------------|--------------------------|-------------------------------|-----|-------------------------|-------|-----------------------------|
| | | | | VP | VPX | VP | VPX | |
| MERV 11 - 60-65% EFFICIENCY | | | | | | | | |
| 2424B1 | 24 x 24 x 12 | 23-3/8" x 23-3/8" x 11-1/2" | 500 | .26 | .33 | 191.32 | 96.00 | 610 x 610 x 305 |
| 2420B1 | 24 x 20 x 12 | 23-3/8" x 19-3/8" x 11-1/2" | 500 | .26 | .33 | 155.93 | 78.00 | 610 x 508 x 305 |
| 2412B1 | 24 x 12 x 12 | 23-3/8" x 11-3/8" x 11-1/2" | 500 | .26 | .33 | 85.15 | 43.00 | 610 x 305 x 305 |
| MERV 13 - 80-85% EFFICIENCY | | | | | | | | |
| 2424B2 | 24 x 24 x 12 | 23-3/8" x 23-3/8" x 11-1/2" | 500 | .29 | .41 | 191.32 | 96.00 | 610 x 610 x 305 |
| 2420B2 | 24 x 20 x 12 | 23-3/8" x 19-3/8" x 11-1/2" | 500 | .29 | .41 | 155.93 | 78.00 | 610 x 508 x 305 |
| 2412B2 | 24 x 12 x 12 | 23-3/8" x 11-3/8" x 11-1/2" | 500 | .29 | .41 | 85.15 | 43.00 | 610 x 305 x 305 |
| MERV 14 - 90-95% EFFICIENCY | | | | | | | | |
| 2424B3 | 24 x 24 x 12 | 23-3/8" x 23-3/8" x 11-1/2" | 500 | .32 | .45 | 191.32 | 96.00 | 610 x 610 x 305 |
| 2420B3 | 24 x 20 x 12 | 23-3/8" x 19-3/8" x 11-1/2" | 500 | .32 | .45 | 155.93 | 78.00 | 610 x 508 x 305 |
| 2412B3 | 24 x 12 x 12 | 23-3/8" x 11-3/8" x 11-1/2" | 500 | .32 | .45 | 85.15 | 43.00 | 610 x 305 x 305 |
| MERV 15 - 98% EFFICIENCY | | | | | | | | |
| 2424B9 | 24 x 24 x 12 | 23-3/8" x 23-3/8" x 11-1/2" | 500 | .33 | .49 | 191.32 | 96.00 | 610 x 610 x 305 |
| 2420B9 | 24 x 20 x 12 | 23-3/8" x 19-3/8" x 11-1/2" | 500 | .33 | .49 | 155.93 | 78.00 | 610 x 508 x 305 |
| 2412B9 | 24 x 12 x 12 | 23-3/8" x 11-3/8" x 11-1/2" | 500 | .33 | .49 | 85.15 | 43.00 | 610 x 305 x 305 |
| MERV 16 - 95% @ .3 microns | | | | | | | | |
| 23F23FB4 | 24 x 24 x 12 | 23-3/8" x 23-3/8" x 11-1/2" | 500 | .78 | - | 191.32 | - | 610 x 610 x 305 |
| 23F19FB4 | 24 x 20 x 12 | 23-3/8" x 19-3/8" x 11-1/2" | 500 | .78 | - | 155.93 | - | 610 x 508 x 305 |
| 23F11FB4 | 24 x 12 x 12 | 23-3/8" x 11-3/8" x 11-1/2" | 500 | .78 | - | 85.15 | - | 610 x 305 x 305 |
| 99.97% @ .3 microns | | | | | | | | |
| 23F23FB5 | 24 x 24 x 12 | 23-3/8" x 23-3/8" x 11-1/2" | 275 | 1.0 | - | 191.32 | - | 610 x 610 x 305 |
| 23F19FB5 | 24 x 20 x 12 | 23-3/8" x 19-3/8" x 11-1/2" | 275 | 1.0 | - | 155.93 | - | 610 x 508 x 305 |
| 23F11FB5 | 24 x 12 x 12 | 23-3/8" x 11-3/8" x 11-1/2" | 275 | 1.0 | - | 85.15 | - | 610 x 305 x 305 |

Tolerances shall be +/- 1/16" for height and width. The frame depth shall be 11-1/2" +/- 1/8". Performance values based on ASHRAE and in-house testing methods.
Recommended Final Resistance: VP=2.0" in w.g., VPX=1.5" in w.g.

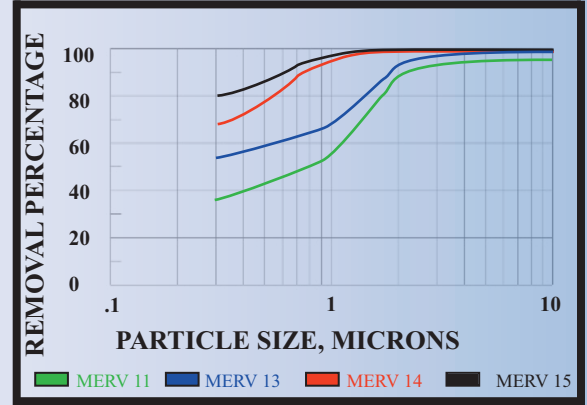
PURACELL VP STANDARD PRESSURE DROP

Test Filter Size 24" x 24" x 12" Nominal



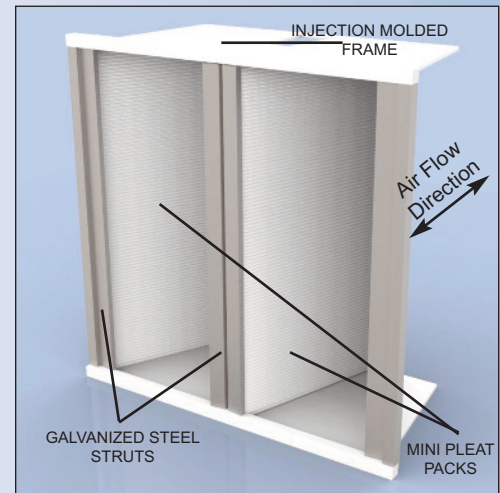
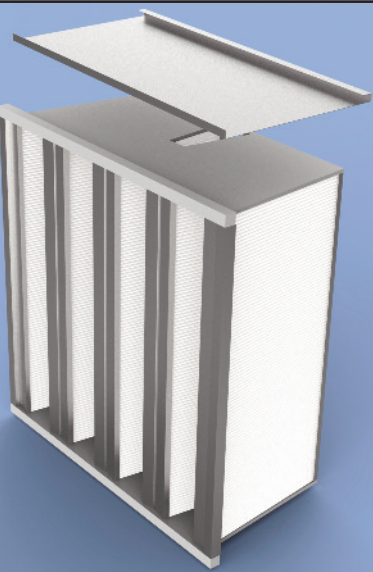
PURACELL VP/VPX MINIMUM PARTICLE SIZE EFFICIENCY

Test Filter Size 24" x 24" x 12" Nominal



Double Header Option:

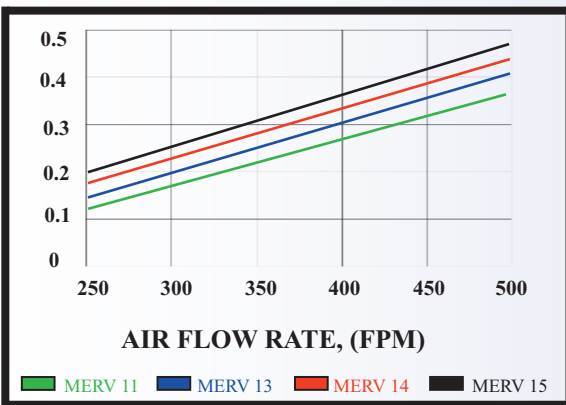
Puracell VP & VPX are available in single or double header designs. Please reference the part number configuration chart on the back page to determine correct part number.



Puracell VPX Filter

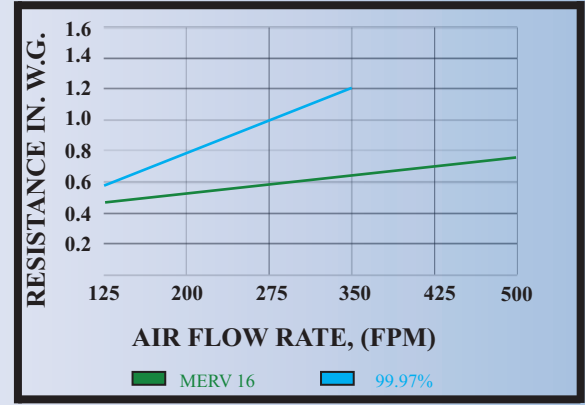
PURACELL VPX STANDARD PRESSURE DROP

Test Filter Size 24" x 24" x 12" Nominal



PURACELL VP STANDARD PRESSURE DROP

Test Filter Size 24" x 24" x 12" Nominal



"Serving You With Locations Throughout The Nation"

Glasfloss has a policy of uninterrupted research, development and product improvement and reserves the right to change design and specifications without notice.

www.glasfloss.com · (214) 741-7056

Energy Savings & Environmental Impact Comparison

| | <u>Glasfloss Puracell VP</u> | <u>Traditional Rigid Cell</u> |
|--|------------------------------|-------------------------------|
| MERV Rating | 14 | 14 |
| Initial Resistance (in. w.g) | 0.32 | 0.68 |
| *Recommended Final Resistance (in. w.g.) | 2.0 | 1.5 |
| **Fan/Motor/Drive Efficiency (%) | 58.00% | 58.00% |
| ***Energy Consumption (kWh) | 2649 | 3876 |
| Annual CO2 Emissions (lbs) | 3581 | 5240 |
| Annual Energy Cost (\$.08/kWh) | \$212.00 | \$310.00 |

* VP pressure drop estimated at 1.17 in. w.g. after 12 months

** Fan/Motor/Drive Efficiency estimated & averaged at 58%

*** Kilowatt cost estimated at \$.08/kWh

Glasfloss Puracell VP = \$98.00 energy savings per filter or annually 31.7% savings per this comparison.

PART NUMBER CONFIGURATION FOR VP & VPX

PREFIX



PUP = VP

PUX = VPX

FRAME STYLE



H = Header

D = Double Header

BASE PART NUMBER



NUMERICAL SIZE
OF FILTER AND
EFFICIENCY

GASKET LOCATION



O= NO GASKET

SINGLE HEADER

E = AIR ENTRY/EXIT (8)

F = AIR ENTRY(4)

H = AIR EXIT (4)

J = SIDE LOAD (2)

S= SIDE LOAD (1)

DOUBLE HEADER

K = AIR

ENTRY/EXIT (8)

M= AIR ENTRY (4)

Q = AIR EXIT(2)

Distributed by:



"Serving You With Locations Throughout The Nation"

Glasfloss has a policy of uninterrupted research, development and product improvement and reserves the right to change design and specifications without notice.

www.glasfloss.com · (214) 741-7056