

MAGNA

600, 800 & 900 Series

- High Efficiency Glass Microfiber
- Heavy-Duty 3/4" Particleboard or Galvanized Metal Frames
- Sealed Media Pack
- Optional 1/4" Thick Gasketing
- High Capacity and High Temperature Filters Available

Glasfloss Magna ASHRAE Series filters are designed to meet exact specifications in medium- to high-efficiency commercial or industrial applications. ASHRAE efficiency ranges include 600 Series: MERV 11, 800 Series: MERV 13 and 900 Series: MERV 14. Glasfloss Magna ASHRAE filters are produced in a wide range of sizes, frame types and header combinations and are ideal for converting or upgrading existing systems. Glasfloss Magna ASHRAE Series filters are designed for use where a high degree of cleanliness is required and contaminants must be removed to protect life, products or building interiors. The filters are ideal in a variety of applications including hospitals, manufacturing plants, microelectronic component assembly, food processing, gas turbine, centrifugal compressor and high temperature processes.

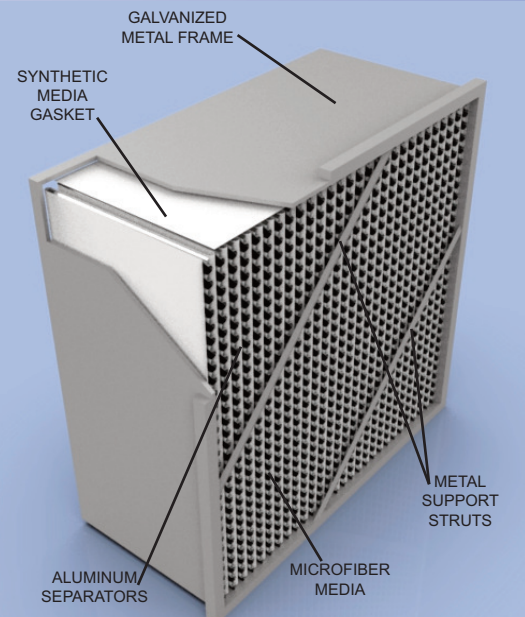
FEATURES



The frame shall be made of a rigid high-density 3/4" particleboard or 26-gauge galvanized metal. The metal frame shall have two support struts on the air-entry and air-exit sides. A 26-gauge galvanized steel header is available on the metal frame. The media shall be constructed of a water-resistant inorganic glass microfiber. For quality assurance, the glass microfiber media rolls are randomly tested and certified to meet minimum efficiency requirements by the media manufacturer. The media pack shall consist of a continuous sheet of the pleated glass microfiber. The pleated media pack is separated with multiple rolled-edge corrugated aluminum separators. The media pack shall be pressure-fitted with a synthetic media gasket on metal frame filters. A 1/4" thick gasket shall be applied on the filter as an option. The filter shall be rated to withstand temperatures up to 180 degrees Fahrenheit. The particleboard filters and metal frame filters shall be Classified under U. L. Std. 900. The Magna Series shall have the following performance.



SPECIFICATIONS



Series	600	800	900
Avg. Efficiency	60-65%	80-85%	90-95%
MERV	11	13	14

"Serving You With Locations Throughout The Nation"

Glasfloss has a policy of uninterrupted research, development and product improvement and reserves the right to change design and specifications without notice.

www.glasfloss.com · (214) 741-7056

PRODUCT BULLETIN 10A-1 · SECTION 10 · 4-30-18

600 Series: MERV 11 & 800 Series: MERV 13

BASE MODEL NUMBER		SIZE H x W x D NOMINAL	SIZE H x W x D EXACT	RATED VELOCITY FPM	INITIAL RESIST. IN. W.G.		MEDIA SQUARE FEET	SIZE H x W x D NOMINAL MM	RATED VELOCITY M/H	INITIAL RESIST. PASCALS	
65%	85%				65%	85%				65%	85%
2016A1	2016A2	20 x 16 x 6	19-3/8 x 15-3/8 x 5-7/8	250	.20	.30	30.46	508 x 406 x 152	4575	49.7	74.6
2020A1	2020A2	20 x 20 x 6	19-3/8 x 19-3/8 x 5-7/8	250	.20	.30	38.67	508 x 508 x 152	4575	49.7	74.6
2412A1	2412A2	24 x 12 x 6	23-3/8 x 11-3/8 x 5-7/8	250	.20	.30	27.46	610 x 305 x 152	4575	49.7	74.6
2418A1	2418A2	24 x 18 x 6	23-3/8 x 17-3/8 x 5-7/8	250	.20	.30	41.85	610 x 457 x 152	4575	49.7	74.6
2420A1	2420A2	24 x 20 x 6	23-3/8 x 19-3/8 x 5-7/8	250	.20	.30	46.49	610 x 508 x 152	4575	49.7	74.6
2424A1	2424A2	24 x 24 x 6	23-3/8 x 23-3/8 x 5-7/8	250	.20	.30	55.46	610 x 610 x 152	4575	49.7	74.6
1625A1	1625A2	16 x 25 x 6	15-3/8 x 24-3/8 x 5-7/8	250	.20	.30	38.79	406 x 635 x 152	4575	49.7	74.6
2025A1	2025A2	20 x 25 x 6	19-3/8 x 24-3/8 x 5-7/8	250	.20	.30	48.19	508 x 635 x 152	4575	49.7	74.6
2016B1	2016B2	20 x 16 x 12	19-3/8 x 15-3/8 x 11-1/2	500	.50	.55	61.38	508 x 406 x 305	9150	124.4	136.8
2020B1	2020B2	20 x 20 x 12	19-3/8 x 19-3/8 x 11-1/2	500	.50	.55	76.24	508 x 508 x 305	9150	124.4	136.8
2412B1	2412B2	24 x 12 x 12	23-3/8 x 11-3/8 x 11-1/2	500	.50	.55	55.82	610 x 305 x 305	9150	124.4	136.8
2418B1	2418B2	24 x 18 x 12	23-3/8 x 17-3/8 x 11-1/2	500	.50	.55	82.4	610 x 457 x 305	9150	124.4	136.8
2420B1	2420B2	24 x 20 x 12	23-3/8 x 19-3/8 x 11-1/2	500	.50	.55	91.22	610 x 508 x 305	9150	124.4	136.8
2424B1	2424B2	24 x 24 x 12	23-3/8 x 23-3/8 x 11-1/2	500	.50	.55	110.91	610 x 610 x 305	9150	124.4	136.8
1625B1	1625B2	16 x 25 x 12	15-3/8 x 24-3/8 x 11-1/2	500	.50	.55	76.95	406 x 635 x 305	9150	124.4	136.8
2025B1	2025B2	20 x 25 x 12	19-3/8 x 24-3/8 x 11-1/2	500	.50	.55	95.16	508 x 635 x 305	9150	124.4	136.8

900 Series: MERV 14

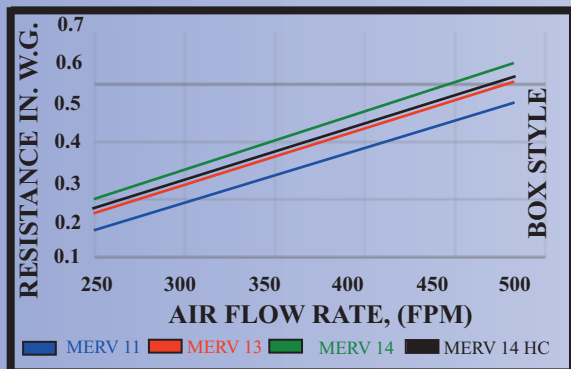
BASE MODEL NUMBER		SIZE H x W x D NOMINAL	SIZE H x W x D EXACT	RATED VELOCITY FPM	INITIAL RESIST. IN. W.G.		MEDIA SQUARE FEET		SIZE H x W x D NOMINAL MM	RATED VELOCITY M/H	INITIAL RESIST. PASCALS	
95%	HC				95%	HC	95%	HC				
2016A3	20 x 16 x 6	19-3/8 x 15-3/8 x 5-7/8	250	.35	-	30.46	-	508 x 406 x 152	4575	87.1	-	
2020A3	20 x 20 x 6	19-3/8 x 19-3/8 x 5-7/8	250	.35	-	38.67	-	508 x 508 x 152	4575	87.1	-	
2412A3	24 x 12 x 6	23-3/8 x 11-3/8 x 5-7/8	250	.35	-	27.46	-	610 x 305 x 152	4575	87.1	-	
2418A3	24 x 18 x 6	23-3/8 x 17-3/8 x 5-7/8	250	.35	-	41.85	-	610 x 457 x 152	4575	87.1	-	
2420A3	24 x 20 x 6	23-3/8 x 19-3/8 x 5-7/8	250	.35	-	46.49	-	610 x 508 x 152	4575	87.1	-	
2424A3	24 x 24 x 6	23-3/8 x 23-3/8 x 5-7/8	250	.35	-	55.46	-	610 x 610 x 152	4575	87.1	-	
1625A3	16 x 25 x 6	15-3/8 x 24-3/8 x 5-7/8	250	.35	-	38.79	-	406 x 635 x 152	4575	87.1	-	
2025A3	20 x 25 x 6	19-3/8 x 24-3/8 x 5-7/8	250	.35	-	48.19	-	508 x 635 x 152	4575	87.1	-	
2016B3	20 x 16 x 12	19-3/8 x 15-3/8 x 11-1/2	500	.60	.55	61.38	73.66	508 x 406 x 305	9150	149.3	136.8	
2020B3	20 x 20 x 12	19-3/8 x 19-3/8 x 11-1/2	500	.60	.55	76.24	91.49	508 x 508 x 305	9150	149.3	136.8	
2412B3	24 x 12 x 12	23-3/8 x 11-3/8 x 11-1/2	500	.60	.55	55.82	66.98	610 x 305 x 305	9150	149.3	136.8	
2418B3	24 x 18 x 12	23-3/8 x 17-3/8 x 11-1/2	500	.60	.55	82.4	98.88	610 x 457 x 305	9150	149.3	136.8	
2420B3	24 x 20 x 12	23-3/8 x 19-3/8 x 11-1/2	500	.60	.55	91.22	109.46	610 x 508 x 305	9150	149.3	136.8	
2424B3	24 x 24 x 12	23-3/8 x 23-3/8 x 11-1/2	500	.60	.55	110.91	133.09	610 x 610 x 305	9150	149.3	136.8	
1625B3	16 x 25 x 12	15-3/8 x 24-3/8 x 11-1/2	500	.60	.55	76.95	92.34	406 x 635 x 305	9150	149.3	136.8	
2025B3	20 x 25 x 12	19-3/8 x 24-3/8 x 11-1/2	500	.60	.55	95.16	114.19	508 x 635 x 305	9150	149.3	136.8	

Tolerances shall be +/- 1/16" for height and width. The frame depth shall not exceed 5-7/8" and 11-1/2". High Capacity MERV 14 Magna filters contains 20% more media.

Performance values based on ASHRAE and in-house testing methods. Recommended final resistance is 1.50" in. w.g.

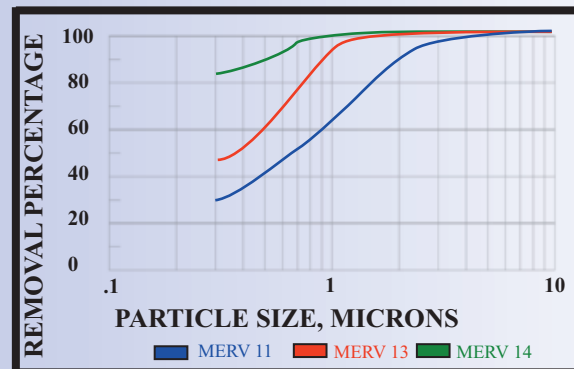
STANDARD PRESSURE DROP

Test Filter Size 24" x 24" x 12" Nominal



MINIMUM PARTICLE SIZE EFFICIENCY

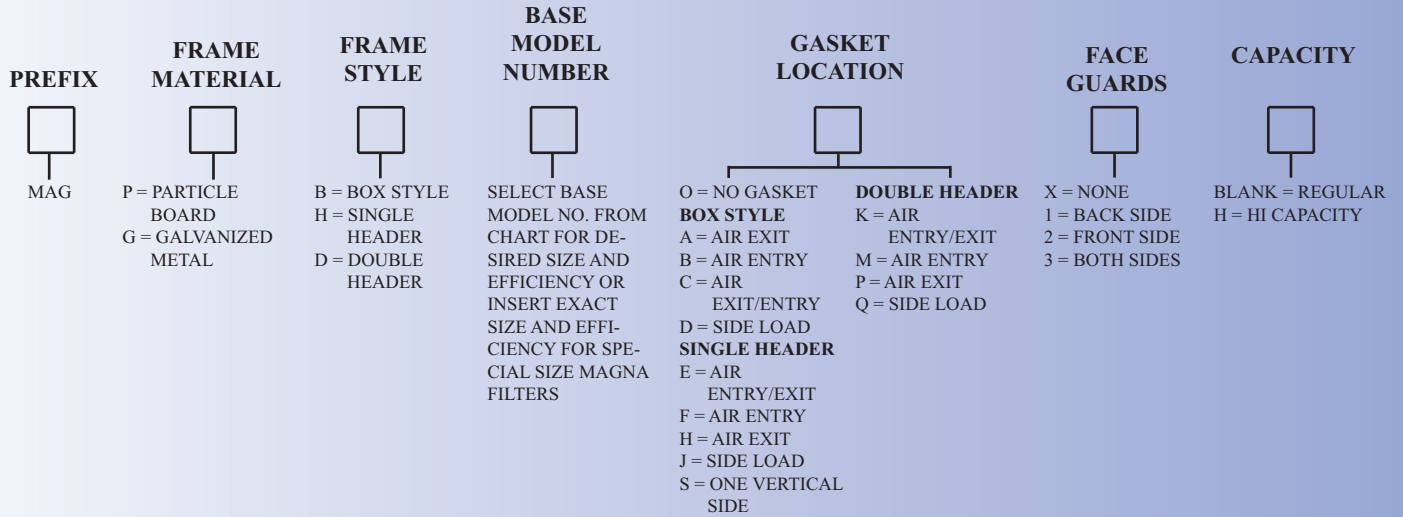
Test Filter Size 24" x 24" x 12" Nominal



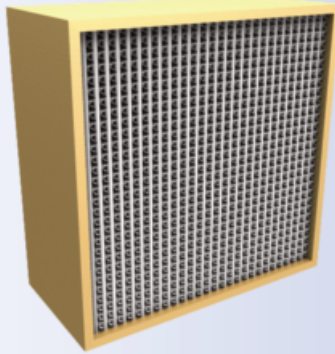
"Serving You With Locations Throughout The Nation"

Glasfloss has a policy of uninterrupted research, development and product improvement and reserves the right to change design and specifications without notice.

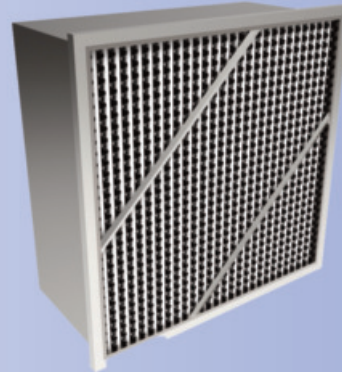
PART NUMBER CONFIGURATION



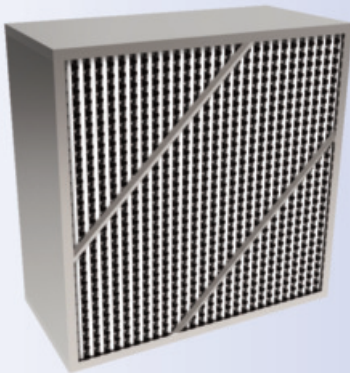
WOOD BOX



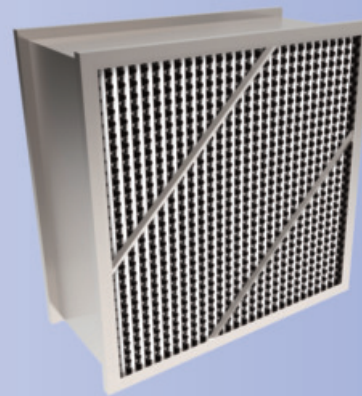
METAL SINGLE HEADER



METAL BOX



METAL DOUBLE HEADER



Features:

- Media produced from glass microfibers are moisture resistant and will not support microbial growth.
- Frame is available in either 3/4" particleboard or 26-gauge galvanized metal.
- Aluminum separators incorporate rolled edges that help prevent media chaffing and damage in handling.
- The filter cartridge is secured within the frame using a pressure-fit synthetic media gasket on metal frames and a two-part polyurethane sealant on particleboard frames to prevent air-bypass.
- Magna 600, 800 and 900 series are available in standard and special size face dimensions.

Optional Features:

- An expanded metal wire lathe face guard can be placed on air-entry and/or air-exit side of the filter.
- High-temperature, high-capacity and turbine-style filters are available.
- A 1/4" thick gasket may be applied on the filter.



SPECIFICATIONS FOR MAGNA SERIES

Series	600	800	900
Avg. Efficiency	60-65%	80-85%	90-95%
MERV	11	13	14

The filter element shall be factory-constructed by pleating a continuous sheet of glass microfiber media into uniform spaced pleats which are separated by rolled-edge corrugated aluminum. The filter pack shall be encased in a rigid frame of 3/4" particleboard or 26-gauge galvanized metal. The media pack shall be pressure-fitted with a synthetic media gasket on metal frame filters. The 26-gauge steel frames shall have two support struts on the air-entry and air-exit sides. The frame shall not exceed 5-7/8" or 11-1/2" in depth and standard tolerances shall be +/- 1/16" on height and width. Each filter shall be packaged into a heavy-duty carton. All filters shall be Classified under U. L. Std. 900.



Distributed by:

